

## What's INSIDE

- **Star Wars™** Weekends returns
- Step into an Enchanted Forest
- Stay in the story at **Disney's Art of Animation** Resort
- Meet Disney•Pixar's adventurous new heroine
- Sing along with Sounds Like Summer
- **Disney Cruise Line** News
- And Much More

## GET MORE

Add your email address to your profile at [disneyworld.com/passholder](http://disneyworld.com/passholder) to enjoy extra-special benefits.

## ON THE COVER

"Donald Maul" by Greg McCullough celebrates this year's incredible edition of **Star Wars Weekends**. Greg has been associated with the event for many years, creating amazing artwork and even appearing at the event to present his original paintings.

**Mickey monitor**  
The Walt Disney World® Passholder Newsletter

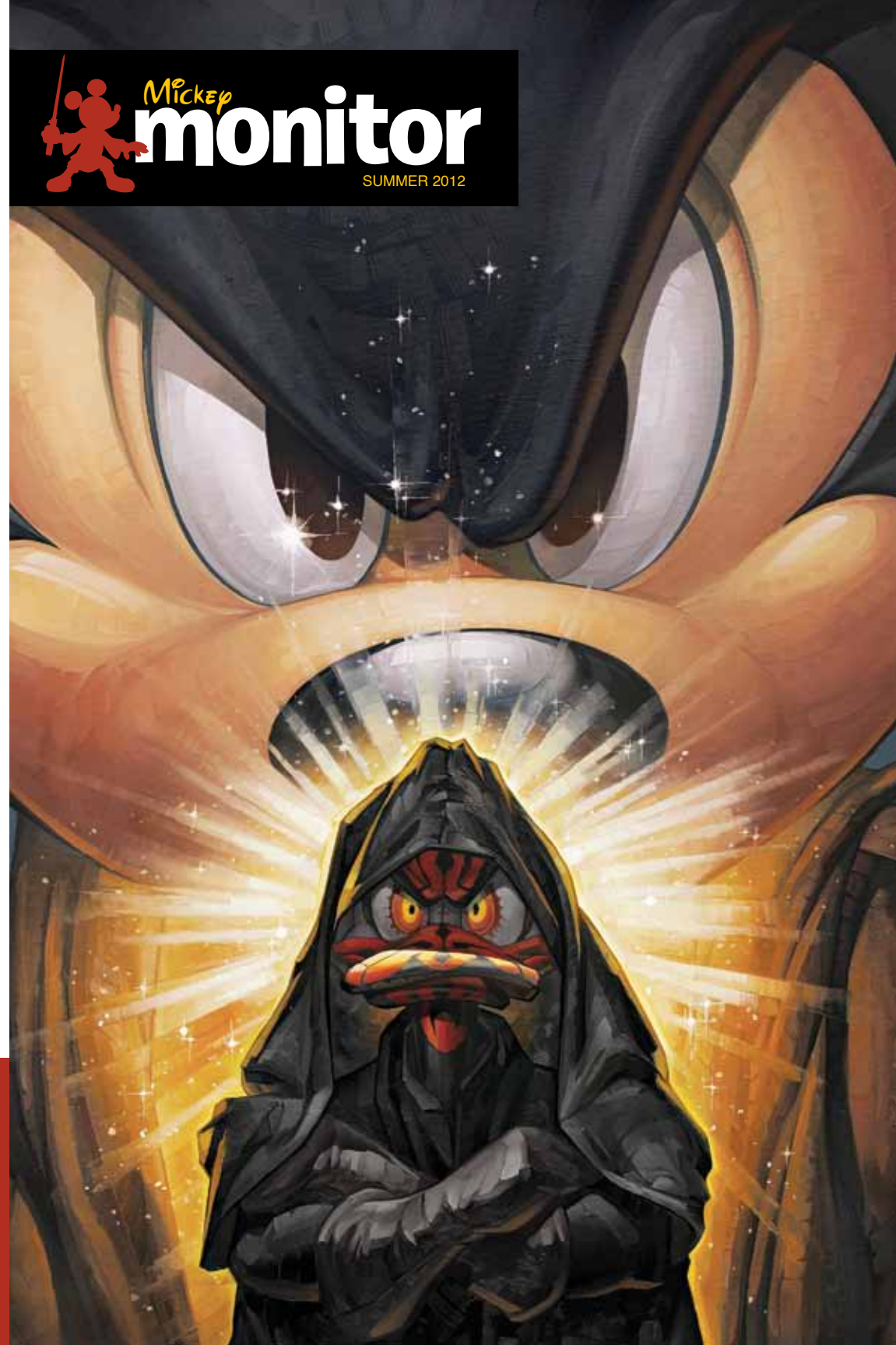
Disney Destinations, LLC  
PO Box 10045  
Lake Buena Vista, FL 32830-0045

PRSRT STD  
U.S. POSTAGE  
**PAID**  
Disney  
Destinations, LLC



©Disney WDWRES-PASS-12-22052  
©Disney/Lucasfilm Ltd. © 2012 Lucasfilm Ltd. & TM.

**Mickey**  
**monitor**  
SUMMER 2012





# May (and June) the Force Be With You

*Star Wars™ Weekends returns May 18 to June 10, 2012*

Set the coordinates on your navi-computer to **Disney's Hollywood Studios®**. Because **Star Wars Weekends** will be there in full force, every **Friday, Saturday and Sunday** from **May 18 to June 10, 2012**. This year, the intergalactic event will focus on **Episode I: The Phantom Menace**, which recently lit up theater screens in eye-popping 3-D. Most of the event's celebrity lineup—including **Jake Lloyd** (Young Anakin)—will represent **Episode I**. Additionally, **Star Wars Weekends** will feature some of the favorite characters from the film, including Darth Maul, Mace Windu, Queen Amidala, Aurra Sing and of course, C-3PO and R2-D2. Join the fun in a special Legends of the Force motorcade, a Stars of the Saga talk show and autograph sessions.

## Check out the highlights:

- **Star Tours®—The Adventures Continue** This spectacular 3-D attraction is the centerpiece of the celebration. Fly on a Starspeeder 1000 with over 50 different adventures and see where the Force might take you!
- **Behind the Force** takes Guests behind the scenes at **Star Wars: The Clone Wars**. Hosted by **Ashley Eckstein** (Ahsoka Tano), the show features a different **Clone Wars** celebrity each weekend in a chat about what goes into the making of the TV program.
- **Hyperspace Hoopla** is the megapopular end-of-the-day event that's become a YouTube sensation. The **Star Wars** characters converge to compete against one another in a variety of musical dance competitions. The results are truly out of this world.

For more information and future updates, visit [disneyworld.com/starwarsweekends](http://disneyworld.com/starwarsweekends).

©Disney/Lucasfilm Ltd. ©2012 Lucasfilm Ltd. & TM.



Be sure to arrive early to the **Stars of the Saga** talk show for a takeover like no other. Or set your alarm clock and get to **Disney's Hollywood Studios®** early in the morning for a rooftop surprise.

# A Galaxy of Characters

This year, **Star Wars™** Weekends boasts more than 50 characters. Look for them in Meet 'N' Greet encounters, roaming the Park and even showing up in the most unexpected surprise moments. And don't miss the Legends of the Force motorcade, where you can see many of the **Star Wars** characters and celebrities in one place at one time. The motorcade ends at the Sorcerer's Hat stage with a not-to-be-missed photo opportunity. Here are just a few to look out for.



## Anakin Skywalker

**HOMEWORLD:** Tatooine  
**SPECIES:** Human  
**AFFILIATIONS:** Jedi, Boonta Eve Classic, Sith  
 Young Jedi often seen wearing a robe and carrying a lightsaber. Went from child slave to Jedi Knight to Dark Lord.



## Queen Amidala (Padmé)

**HOMEWORLD:** Naboo  
**SPECIES:** Human  
**AFFILIATION:** Galactic Senate  
 Amidala can be found wearing elaborate costumes and ornate headdresses. Always wanted Anakin to hold her like he did by the lake at Naboo.

## Boba Fett

**HOMEWORLD:** Kamino  
**SPECIES:** Human  
**AFFILIATION:** Bounty Hunter  
 Look for the faceless enforcer clad in battered armor and a very obvious rocketpack. Avoid carbonite.



## R2-D2

**HOMEWORLD:** Naboo  
**SPECIES:** Astromech Droid  
**AFFILIATION:** Rebel Alliance  
 Short, spunky, blue and white droid. Rolls around making beeping noises. Good wing "man."



## Aurra Sing

**HOMEWORLD:** Nar Shaddaa  
**SPECIES:** Unknown  
**AFFILIATIONS:** Bounty Hunter  
 Look for chalk-white skin and a fashionable, yet functional, red jumpsuit.



## Stormtroopers

**AFFILIATION:** The Empire  
 They, like the Clone Troopers, all look alike. Encased in white armored spacesuit shells from head to toe. Armed with blaster pistols or rifles.



## Darth Vader

**HOMEWORLD:** Tatooine  
**SPECIES:** Human with a touch of machine  
**AFFILIATIONS:** The Empire, Sith  
 Heavy breather. Wears lots of black. Enjoys destroying worlds, lightsaber duels and father/son outings.



## Darth Maul

**HOMEWORLD:** Iridonia  
**SPECIES:** Zabrak  
**AFFILIATION:** Sith  
 Red and black tattooed face; carries a double-bladed lightsaber. Kinda angry.



## Jedi Mickey

**HOMEWORLD:** Earth  
**SPECIES:** M-O-U-S-E  
**AFFILIATION:** Disney's Hollywood Studios® Jedi  
 Large black ears, brown robe, white gloves. Always smiling.

©Disney/Lucasfilm Ltd. ©2012 Lucasfilm Ltd. & TM.

## Darth's Mall

Don't forget to use your Passholder discount for these exclusive goodies and more in the marvelous merchandise locale adjacent to **Rock 'n' Roller Coaster®** Starring Aerosmith at the end of Sunset Boulevard. This is so wizard!



Men's & Ladies' T-shirts



Collector's Pins



Framed Commemorative Coin Set



Two-sided Commemorative Coin



## Secrets of the Enchanted Forest

It's the essence of any great fairy tale. You follow a path through an enchanted forest past lush landscapes, rushing waterfalls and quaint cottages. In the distance lies a magnificent castle. And throughout your journey, magical experiences unfold around every corner.

Nowhere does this fairy tale aesthetic come to life more vividly than in **Enchanted Forest**, the next phase of **New Fantasyland**® set to open over the 2012 holiday season. Here's a preview of some of the magical secrets you'll discover.

On your way to enjoy the music and merriment of **Under The Sea~Journey of The Little Mermaid** in Prince Eric's castle, you'll notice a tip of the hat to a previous resident of this **Magic Kingdom**® spot hidden in the rocky coast. Look closely and you'll see that Walt Disney Imagineers have sculpted a miniature replica of the Nautilus sub from **20,000 Leagues Under the Sea**.

Elsewhere, Maurice's workshop becomes a magical portal into Belle's world with **Enchanted Tales with Belle**, where the lovely princess retells the tale of **Beauty and the Beast** with a little help from her audience and her old friend Lumière.

Later, as you enter the **Beast's Castle**, you won't be able to miss the giant minotaurs that seem to hold the arched ceiling aloft. Magnificent works of art and gorgeous stained glass windows were especially created for Walt Disney Imagineering.

And while in Beast's Castle, you can enjoy Quick-service dining by day and Table-service dining by night at the **Be Our Guest** restaurant. Here, an enormous mural in the main dining room will immerse you in the time and place of the **Beauty and the Beast** animated film. Walt Disney Imagineering artists created it first as a digital file and then projected it on the wall so scenic painters could bring it all to life: a fictional French valley where the stars are always twinkling and the snow is lightly falling.



*Above: **Under The Sea~Journey of The Little Mermaid** invites you to be part of Ariel's world.*



*Left: Join in on the story during **Enchanted Tales with Belle**.*



*Below: Feast in the beautiful Ballroom of the **Be Our Guest** restaurant.*

# Your Pass to the Best Summer Ever!

As a *Walt Disney World*® Passholder, you've got the key to a ton of summer fun right in your back pocket. So get set to make good use of your Passholder discounts, they'll brighten your day all summer long.



## Relax with a round of Golf

Tee off for a money-saving round on **Disney's Magnolia, Palm, Osprey Ridge** and **Lake Buena Vista** Golf Courses. The PGA Pros play here, so why shouldn't our Passholders join in on the fun? Enjoy a **30% discount** off Day Guest Rates for the Passholder and up to three (3) Guests in the party.

The discount is available on Day Guest Rates for play any time of day. Discounts cannot be applied to any other discount or special rate including, but not limited to, Twilight Rates. Tee times at this rate are limited and may be made up to fourteen (14) days in advance by calling 407-WDW-GOLF (407-939-4653). Advance reservations required. Valid on Championship Courses only (Magnolia, Palm, Osprey Ridge and Lake Buena Vista).



## Head out on the Water

Imagine the wind in your hair and a sea of possibilities ahead of you. Okay, it's more like a lake, but in any case, boating and summer were made for each other. Passholders receive a **15% discount** off the regular price of boat rentals at any **Walt Disney World** Resort Marina, including Specialty Fireworks Cruises.

Subject to availability. Certain age restrictions apply (excludes Holiday Event Specialty Cruises and the Grand 1 Yacht).



## Take in a Summer Blockbuster

Do we have the perfect summer movie for you! Check out the Disney•Pixar film, **Brave** at **AMC Theatres® Downtown Disney 24** and receive **\$2 off** adult evening admission price. This magical new adventure is in theaters starting June 22, 2012.

Offer is valid for the Passholder only and not valid with any other offer or discount.

## Challenge the Water

At **Walt Disney World**® Resort, enjoying the water can get pretty intense, too. Challenge yourself to a little parasailing, water skiing, wakeboarding, tubing and more at **Sammy Duvall's Watersports Centre**. Passholders receive **10% off** all activities. Sammy Duvall's Watersports Centre is located at **Disney's Contemporary** Resort marina. For more information or to make reservations (suggested), please call us at **407-939-0754**.

Excludes merchandise and cannot be combined with other promotions. Valid through 12/31/12. Certain age restrictions apply.



## Make a splash at the Disney Water Parks

As a Passholder, you're probably pretty familiar with the awesome experiences available at **Disney's Typhoon Lagoon** and **Disney's Blizzard Beach** Water Parks. But did you know you can save on a day of watery fun? Passholders enjoy a **\$4 discount** off regular admission price for Guests ages 10 and up and a **\$3 discount** for Guests ages 3–9.

Discount available for up to three (3) Guests per visit.

# Get in the Story

*Disney's Art of Animation Resort opens this month*



Get ready to stay inside a Disney story! That's because this month, **Disney's Art of Animation** Resort will begin checking Guests into the magical worlds of classic Disney and Disney•Pixar animated films.

Opening in phases, each of the four courtyards of the Resort will feature colorful icons and whimsical theming inspired by each film depicted. **Finding Nemo** (opening in May), **Cars** (opening in June) and **The Lion King** (opening in August) courtyards will feature family suites that provide room for the whole family to spread out and sleep up to six Guests. Standard Guest rooms make up **The Little Mermaid** courtyard, opening in September.

The story begins at check-in with pencil drawings of Ariel, Lightning McQueen, Nemo and Simba adorning the entryway. "Here, the Resort puts you inside an animator's imagination," said **Gary Hoffmann, Senior Project Manager for Walt Disney Imagineering**. "It's filled with character development sketches that become more and more finished as you move through the building."

Within the Resort, giant sketchbooks filled with favorite characters seem to come to life as they pave the way to each storyline revealed. In the **Finding Nemo** courtyard, the Guests see everything from the scale of Nemo himself. So Mr. Ray is 30 feet in diameter!

Inside, from linens and carpeting to fixtures and furniture, all the details of the suites tie to

"The Resort puts you inside  
an animator's imagination"

the storyline. For the **Finding Nemo** suites, there are coral-shaped headboards and bubble ceiling lights. "It was a challenge for us to create elements in the natural settings of the three films," said Gary. "We used animators who worked on the films to create furnishings specifically for this Resort. This project really brought together a wonderful collection of creative people."

## So much to like about Sounds Like Summer!



For Passholders like you, music's in the air because you can use your Pass to enjoy a summer's worth of performances during the **Sounds Like Summer Concert Series**, June 10–July 28, 2012, at the America Gardens Theatre in World Showcase.

Sounds Like Summer presents the very finest tribute bands that recapture the authentic musical qualities of classic rock bands with spot-on precision and artistry. One of the most popular is Hotel California, a band that's been performing the music of The Eagles for almost 30 years.

"We get more email for our **Epcot**® shows than anywhere else in the country," Hotel California front man **George Dickinson** told us. "Some people plan their vacations around our **Epcot**® dates. Our goal is to give an honest performance, because we believe people respond to that."

And thanks to today's technological advancements, the music you'll hear can have more clarity, brightness and definition than was possible in the heyday of the original band. "At **Epcot**®, everything is state-of-the-art all the way," said George. "We want to put the best we can out there, and at **Epcot**® every note and nuance comes for our listeners."

"This music is the soundtrack for the lives of a lot of people. Occasionally, when one of our guys is singing a heartfelt ballad, we can see someone tearing up or just hanging on every word. They get caught up in the emotional content of the song and its era. Giving them the opportunity to go 'back there' for a moment is a source of joy for me."

*This year, the Sounds Like Summer Concert Series includes bands paying tribute to timeless tunes from U2, The Bee Gees, The Police, Bon Jovi and many more! For a complete listing, see the Calendar on the inside back cover of your Mickey Monitor or visit [disneyworld.com/soundslikesummer](http://disneyworld.com/soundslikesummer) for the latest details.*

# Mind your "P's" and "Q's" —but especially "P's"



## Phineas & Ferb head into *Epcot*® for a whole new adventure.

In late June, look for **Disney Phineas & Ferb: Agent P's World Showcase Adventure** to baffle your brain cells, fascinate your family and set up a silly series of surprises!

Agent P, for those agents out there who have not yet been briefed, is the Fedora-wearing superspy alter ego of Perry the Platypus. Viewers are clued into his dual identity on the Disney Channel animated series, "Phineas & Ferb"—but to the two brothers for whom the series is named, Perry is simply the family pet.

This summer at **Epcot**®, you'll be able to help Agent P carry out orders from Major Monogram, head of the OWCA (which stands for "Organization Without a Cool Acronym") in their never-ending battle with the evil, dysfunctional Dr. Doofenshmirtz. Look for gadgets, gags and goofs throughout the World Showcase nations.

As a Passholder, it's up to you to save the world (as well as the tri-state area) from relentless ruthlessness over and over again—and be on the lookout for new twists in the months to come!



## Meet Pixar's adventurous new heroine!

When Disney•Pixar's **Brave** opens in theaters nationwide in 3D on June 22, 2012, you'll enter a bold and breathtakingly beautiful world, filled with mythical magic, excitement and lots of laughter.

"The film is so lush and rich looking!" **Roger Gould, Creative Director of Theme Parks for Pixar Animation Studios**, told us. "It really pushes the boundaries of what an animated film can be like." And it introduces a great character who will soon seem like a lifelong friend. "People are going to fall in love with Merida when they see the movie—and then they'll fall in love all over again when they meet her in person."

Look for Merida this summer at **Magic Kingdom**® Park for autographs and photos in the Fairytale Garden, just southeast of **Cinderella Castle**.



Kelly Macdonald, the voice of Merida in Disney•Pixar's **Brave**, played Peter Pan in the Miramax film, **Finding Neverland**, starring Johnny Depp.

©Disney/Pixar

# Me, oh my! We're in Miami!

## Disney Cruise Line announces new 2013 itineraries.



South Florida will soon have a bit of Disney magic floating its way. Or should we say Disney wonder? That's because **Disney Wonder**, one of the four ships in the **Disney Cruise Line**® fleet, will be sailing from Miami in early 2013.

The move is a first for **Disney Cruise Line** and Miami. Itineraries offer a mix of 5-night and 4-night cruises to the Western Caribbean and The Bahamas between January 5, 2013, and May 2, 2013. It's a great combination of both location and price. Rates for 4- and 5-night cruises departing from Miami start at **\$540\* per person** for a Standard Inside Stateroom, based on double occupancy in a Category 11B Standard Inside Stateroom. Available on the January 24, 2013, and February 21, 2013 sailings.

The 4- and 5-night cruises have a variety of itineraries. Ports of call may include Cozumel, Mexico; Grand Cayman; Key West; Nassau, Bahamas. Most itineraries will also make a stop at Disney's private island, **Castaway Cay**.

Other recently announced 2013 itineraries include a return to Europe for Mediterranean cruises that will depart from Barcelona and incorporate new ports of call in **Venice, Italy**, and **Mykonos, Greece**. Add to that the return of our

popular Alaskan cruises and our newest ships, **Disney Dream** and **Disney Fantasy**, taking you on Bahamian and Caribbean cruises out of **Port Canaveral**!

Find out more at **disneycruise.com**.

## Miami Sailings

### 5-Night Caribbean

**Ports:** Miami, Cozumel, *Castaway Cay*  
**Departure dates:** Jan. 5, 19, Feb. 2, 16  
March 2, 16, 30, April 13, 27

### 5-Night Caribbean

**Ports:** Miami, Grand Cayman, Cozumel  
**Departure dates:** Jan. 14, 28, Feb. 11, 25  
March 11, 25, April 8, 22

### 4-Night Bahamas

**Ports:** Miami, Key West, Nassau, *Castaway Cay*  
**Departure dates:** Jan. 10, 24, Feb. 7, 21  
March 7, 21, April 4, 18, May 2

\*Rates in U.S. dollars. Offer is subject to availability. Other restrictions may apply. Excludes Government Taxes and Fees, approximately \$70 for 5-Night Western Caribbean Cruises; \$75 for 4-Night Bahamian Cruises (all amounts subject to change). Gratuities and excursions are not included. See *Disney Cruise Line* brochure for applicable Terms and Conditions.

# Passholders save at Disney Soccer Academy

Here's a chance for your rising young soccer star to play and train alongside superstars of the English Premier League. Disney Soccer Academy is a 4-day camp experience that takes place **June 18–21** and **June 25–28, 2012**, at **ESPN Wide World of Sports Complex**.

The program boasts daily appearances by and interaction with a roster of superstars set to include **Craig Bellamy**, (Liverpool), **Paul Robinson** (England, Tottenham) and **Aaron Hughes** (Northern Ireland Captain, Fulham).

With training provided by high-energy, licensed coaches from around the world, Disney Soccer Academy is designed to accommodate male and female athletes, ages 6–18.

The camp experience includes lunch, an event shirt and gifts, all for **\$390** or just **\$290 with Passholder discount**. Hours are 9 a.m. to 3 p.m., Monday–Thursday. Aftercare is available for an additional fee of \$15 per day.

Register online at **disneysocceracademy.com** or to book aftercare, call **1-877-714-5575**.

*Appearances are subject to change without notice.  
Disney Soccer Academy is operated by Midwest Soccer Academy.*



## Disney Passholders!

Get a **\$100 discount** when you register prior to **June 1, 2012**. Please reference discount code: **PASS** when booking.



## PASSHOLDERS! COOL SAVINGS ON A SPRING GETAWAY

What a great way to enjoy the spring! We're offering Passholders great rates on a magical getaway to a **Walt Disney World Value Resort** when you **book now through June 14, 2012**. Act soon for the best dates!

**Disney's All-Star Music Resort starting at \$86 per night, plus tax.**

Most Sunday–Thursday nights this spring.

**Check for great rates for weekends and other Resorts!**

Visit **disneyworld.com/Passholder** or call **407-560-PASS**.

**WALT DISNEY WORLD**  
LET THE MEMORIES BEGIN

The number of rooms available at this rate is limited. Additional per-adult charges apply if more than two adults in a room. No group rates or other discounts apply. Advance reservations required. Passholder must present his or her valid adult Pass at check-in.

Passholders can get even *more perks* all year 'round!

Enjoy Cardmember perks from the moment you get your card, including a Character Meet 'N' Greet at our private Cardmember location.

Become a *Disney Rewards Visa* Cardmember today and receive a **\$100** statement credit after first use.

Apply now at **DisneyWorld100Gift.com** or call **1-800-440-3733** and mention key code **6RSK01**.



Your Every Day Magic<sup>SM</sup>

<sup>1</sup> Offers subject to change without notice. Use a valid Disney's Visa Credit Card and/or *Disney Rewards* Redemption Card for special offers. Must mention the offer to receive the merchandise discount. Merchandise discount may not be used for certain items and is not available at certain locations including *Disneyland* Resort and *Walt Disney World* Resort Operating Participant locations. For entry into the Character Meet 'N' Greet Photo Opportunity, must present your valid Disney's Visa Credit Card. Not valid in combination with other offers, discounts, promotions or with any previous purchase. Minimum purchase and/or separate Theme Park admission may be required. Offer elements are for personal use only and may not be resold. Offer elements, including but not limited to participating locations, are subject to availability and additional restrictions, and may change or be canceled without notice. Please visit [DisneyVisaPerks.com](http://DisneyVisaPerks.com) for full terms and conditions. Chase is not responsible or liable for fulfillment of these Disney Theme Park perks.

To be eligible for Disney's Visa Credit Card you must have a valid permanent home address within the 50 United States or the District of Columbia. Accounts subject to credit approval. Restrictions and limitations apply. Disney's Visa Credit Cards are issued by Chase Bank USA, N.A. See [DisneyWorld100Gift.com](http://DisneyWorld100Gift.com) for pricing and rewards details.

SM, © Disney

# PASSHOLDER Calendar



## INTERNATIONAL FLOWER & GARDEN FESTIVAL Epcot®

Now–May 20, 2012

Don't miss our finale weekend, May 18–20, featuring **Micky Dolenz** of The Monkees on the Flower Power stage and **Genevieve Gorder** of HGTV's *Dear Genevieve* as part of the Designer presentations.

Appearances subject to change



## STAR WARS™ WEEKENDS Disney's Hollywood Studios®

(Fridays, Saturdays & Sundays)  
May 18–June 10, 2012

Join celebrities and characters for special shows, panels, presentations and more in this one-of-a-kind salute to all things *Star Wars*.



## WILD AFRICA TREK Disney's Animal Kingdom® Park

May 29–August 25, 2012

Save \$50 off tours at or after 11:45 a.m. Embark on a thrilling, privately guided expedition into a world of African wildlife.



## NIGHT OF JOY Magic Kingdom® Park

September 7 & 8, 2012

Celebrate this stellar event's 30th anniversary by enjoying one or two nights of live Christian music and Disney fun. Get your tickets at [nighofjoy.com](http://nighofjoy.com).



## THE MAGIC, THE MEMORIES AND YOU! SUMMER EDITION Magic Kingdom® Park

May 25 through the end of summer

It's a rockin' celebration of summer fun that takes us to the beach, the jungle and under the sea with some of your favorite Disney Characters and songs.



## DISNEY PHINEAS & FERB: AGENT P'S WORLD SHOWCASE ADVENTURE Epcot®

Opening late June

Save the world from relentless ruthlessness through gadgets and surprises throughout the World Showcase nations.



## SOUNDS LIKE SUMMER CONCERT SERIES Epcot® America Gardens Theatre 5, 6:45 and 8:15 p.m.

June 10–July 28, 2012

- June 10–17 **HOTEL CALIFORNIA**  
*An Eagles tribute band*
- June 18–23 **MIKE DELGUIDICE & BIG SHOT**  
*The Ultimate Billy Joel Experience*
- June 24–30 **STAYIN' ALIVE**  
*A tribute to the Bee Gees*
- July 1–7 **SLIPPERY WHEN WET**  
*The Ultimate Bon Jovi Tribute*
- June 10–17 **POLICE EXPERIENCE**  
*A tribute to The Police*
- July 18–21 **SOUTHBOUND AND COMPANY**  
*A tribute to Lynyrd Skynyrd*
- July 22–28 **2U**  
*A U2 tribute band*

Entertainment subject to change



## Passholder Benefits Spotlight

### Renewed Benefits!

Your Passholder Benefits have been extended through December 31, 2012! Go to [disneyworld.com/passholder](http://disneyworld.com/passholder) to see the complete list available to you. And start saving today!

### More Online

Take time today to register at [disneyworld.com/passholder](http://disneyworld.com/passholder) and add your Pass to your profile to enjoy extra-special benefits.

### TICKETS ON SALE SOON!



## MICKEY'S NOT-SO-SCARY HALLOWEEN PARTY

Select nights Sept.–Oct.  
Magic Kingdom Park



## MICKEY'S VERY MERRY CHRISTMAS PARTY

Select nights Nov.–Dec.  
Magic Kingdom Park

Go to [disneyworld.com/halloween](http://disneyworld.com/halloween) or [disneyworld.com/christmasparty](http://disneyworld.com/christmasparty) for event information.