



PASSHOLDERS! NOW'S THE TIME FOR A MAGICAL GETAWAY!

If you're ready for fun, now's a great time for a stay in the heart of the magic. Enjoy great rates on a stay at select *Walt Disney World* Resort hotels. Book now through March 8, 2012.

Save up to 35%
at select *Walt Disney World* Resort hotels
for stays most nights now through March 8, 2012.

Visit disneyworld.com/passholder
or call 407-560-PASS

WALT DISNEY WORLD
LET THE MEMORIES BEGIN

The number of rooms available at this rate is limited. Minimum length-of-stay requirements may apply for Friday or Saturday arrivals. Savings based on the non-discounted price that a non-Passholder pays for the same room. Additional per-adult charges apply if more than two adults per room at Disney Value, Moderate and Deluxe Resorts. No group rates or other discounts apply. Advance reservation required. Valid Passholder ID is required at check-in. 35% savings for select Deluxe and Deluxe Villa Resorts. Lower savings for other select *Disney Resorts*.

PSRST/STD
U.S. POSTAGE
PAID
Disney
Destinations, LLC

**Mickey
monitor**

The *Walt Disney World*® Passholder Newsletter

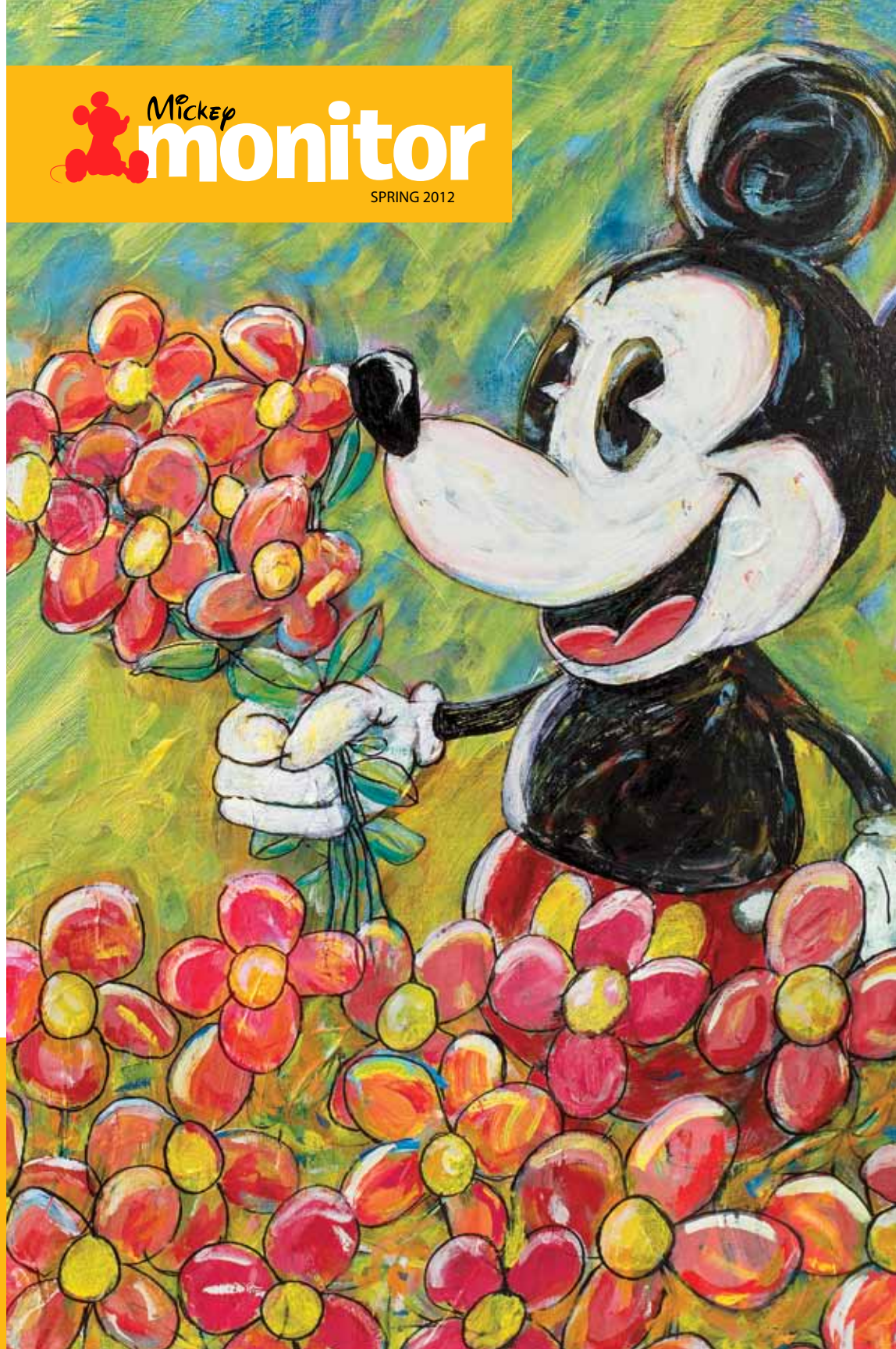
Disney Destinations, LLC

PO Box 10045

Lake Buena Vista, FL 32830-0045



©Disney WDWRES-PASS-11-21251



**MICKEY
monitor**
SPRING 2012

What's INSIDE

- Epcot® International Flower & Garden Festival: Do-It-Yourself Tips
- Exclusive *John Carter* Passholder Movie Preview
- A Chat with OneRepublic
- Leap into 24-Hour Magic
- Royal Guest Rooms Debut
- A Wild Prize for Disney Conservation
- And Much More

GET MORE

Add your email address to your profile at disneyworld.com/passholder to enjoy extra-special benefits.

ON THE COVER

"Stems from Love" by **Joe Kaminski** commemorates this year's Epcot® International Flower & Garden Festival. Joe, who was recently honored with a fourth selection as signature artist for Festival of the Masters, makes his professional home at Disney's Yellow Shoes Creative Group.



Magic in Bloom!

The Epcot® International Flower & Garden Festival
March 7-May 20, 2012

The excitement is growing! In addition to lots of returning favorites, Passholders will be treated to appearances from HGTV stars (see below). Add to that the fluttering fantasy of a beautiful butterfly house. And the chance to catch the more than 75 Disney Character topiaries that populate the Festival, including a blooming tribute to Disney's animated classic **Fantasia** at the front of the Park. Of course each weekend, you'll be treated to the sounds of the **Flower Power Concert Series**, featuring live performances from music stars of the '60s and '70s (see calendar in back of the *Mickey Monitor* for lineup).

HGTV Designers' Stage

Friday-Sunday 12 p.m. and 3 p.m. • Festival Center

- John Gidding: March 9-11
(Curb Appeal: The Block)
- Special Guest To Be Announced:
March 16-18
- **NEW!** Jason Cameron: March 23-25
(Desperate Landscapes and Man Caves)
- **NEW!** Camille Styles: March 30-April 1
(Design Happens)
- **NEW!** Dan Faires: April 6-8
(HGTV Design Star Season 5, HGTV.com Fan Favorite)
- **NEW!** Brandon Johnson: April 13-15
(Make My Yard Disney)
- **NEW!** Meg Caswell: April 20-22
(host of Meg's Great Rooms & HGTV Design Star Winner Season 6)
- **NEW!** Monica Pedersen: April 27-29
(designer/host HGTV's Dream Home and Designed to Sell)
- **NEW!** Antonio Ballatore: May 4-6
(host of HGTV's The Antonio Treatment)
- Special Guest To Be Announced:
May 11-13
- Special Guest To Be Announced:
May 18-20

Presenters subject to change without notice.



How to?

The Epcot® International Flower & Garden Festival hosts a number of gardening demonstrations designed to turn even the most uninspired thumb a definite shade of green. Check out the complete list of topics at disneyworld.com/flower. And in the meantime, check out a couple of quick how-to's we've put together especially for you. Got questions? Stop by the Festival Center or ask any of the horticulturists around the Park. Or call the Walt Disney World® Garden Hotline at 407-938-3900.



Planting a flower bed Disney style

We've seen them whenever we've walked through a Walt Disney World Theme Park—perfectly planted flower beds with just a touch of pixie dust. With a little planning, you can create a similar effect in your yard.



1

Switch out your annuals every three months or so. It's a good way to give even a Florida yard a sense of season. Begin by cultivating the soil to make it lightweight and add a little slow-release fertilizer.



2

Plan a simple design on paper. A walk through one of the Theme Parks will give plenty of ideas. Mark the ground using turf paint. And remember to plan for taller plants in the back of your flower bed.



3

Select your annuals with an eye toward the amount of sun and drainage. For this bed, we'll be choosing two colors that are direct opposites. Yellow and purple are a nice look for spring.



4

Space your plants a few inches apart to allow for growth. Be sure to break up the root ball and firmly press the soil up to plant. Hand water for a week; add liquid feed fertilizer (20-20-20) weekly. Weed and scratch around plants with a cultivator once a week.

Roses at the right time

At the Walt Disney World® Resort, careful planning keeps roses looking perfect at the right time. (Like the Epcot® International Flower & Garden Festival, of course!) Got a special event happening in your own backyard? Get out your calendar and circle the date eight weeks before your special day. That's the time to prune and make your roses appear at their best when you need them to be perfect.

1

Prune to open up the center of the plant and to let in light and air. Cut side branches and plan to shorten the plant by about a third.



2

When pruning, cut ¼-inch above an outward facing bud. Make your cut at a 45-degree angle with a downward slope toward the center of the bush.



3

Regularly irrigate roses below the leaf level to decrease susceptibility to disease. Every week, pinch off flowers that begin to brown. And be sure to remove any leaves that have fallen from roses, as they can spread disease.



m

In Magic Kingdom® Park by Cinderella Castle, Passholders will find the All-American Rose Selections (AARS) Garden, featuring one of the nation's best selections of roses. The garden celebrates award-winning roses from the past 30 years!

Exclusive Passholder Flower & Garden Pin.

Available for just \$12.95 plus tax, a limited-edition Donald Duck Flower & Garden pin is available at the Festival Welcome Center (Wonders of Life Pavilion) and other select locations. It's for Walt Disney World Passholders only, so you must show your Pass to purchase.



Walt Disney Imagineers design rooms worthy of royalty.

Beginning in March, Guests staying at Disney's Port Orleans Resort—Riverside can choose to be treated to Disney's Royal Guest Rooms—befitting not only the kings and queens of the family, but also the princes and princesses.

The rich details inside these rooms will make families feel like they're a character right in the middle of some of their favorite Disney stories. And no one understands the royal components of these amazing new rooms better than **Cathy Carver, Principal Interior Designer** for Walt Disney Imagineering—and the lead designer of these majestic new rooms. Not surprisingly, she also designed the Cinderella Castle Suite inside **Magic Kingdom®** Park—so she certainly knows how to give a room the royal treatment.

"As Guests enter, the first thing they'll notice are the stunning fiber optics above the beautifully decorated beds," said Cathy. "All around the room, Disney Characters have left behind special treasures. Everything from princess pictures to a Cinderella coach coat rack to

a magic carpet on the floor. There's even an Aladdin's lamp water faucet."

As royal decorators, Cathy and a team of Imagineers also incorporated majestic silhouetted prince and princess banners and an Ariel-themed shower curtain beautifully styled with thingamabobs, snarblats and, of course, dinglehoppers.

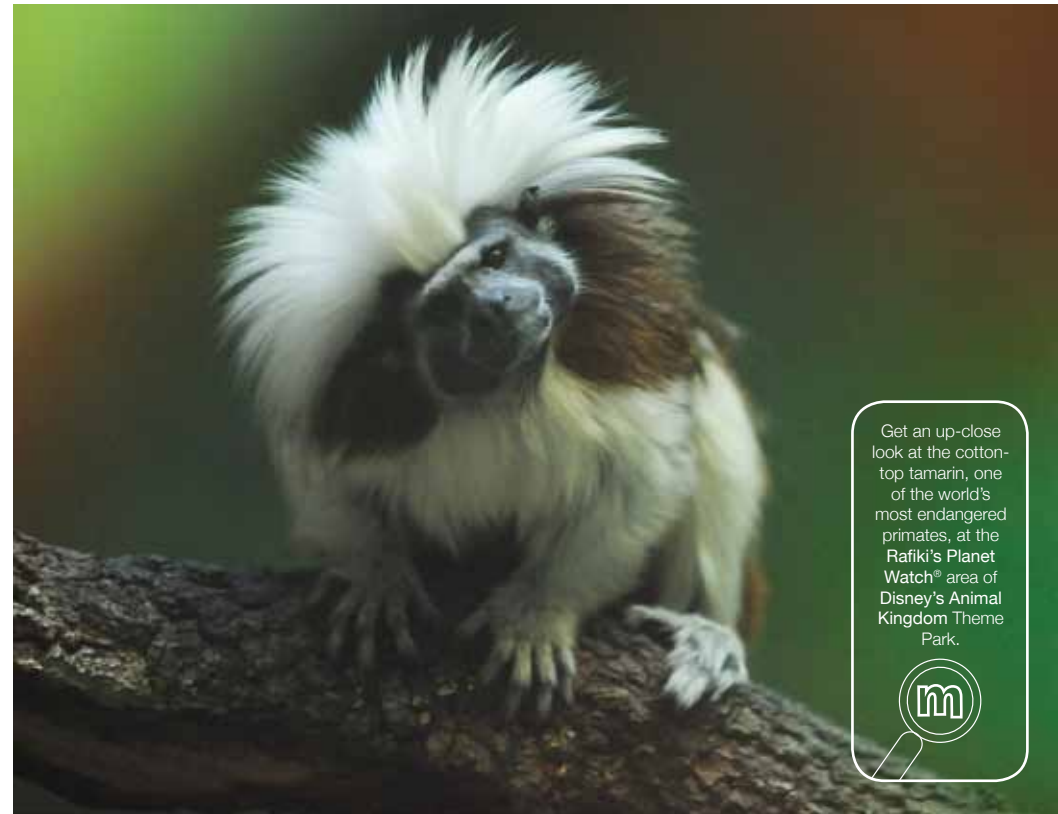
"Guests will feel like they're part of a royal reality."

"These rooms have a wonderful magic to them," says Cathy. "Guests will feel like they're part of a royal reality."

The Royal Guest Rooms are just one component of a whole new category of accommodations called Disney Story Rooms. The concept debuted with the Pirate Rooms at **Disney's Caribbean Beach Resort** and will continue to expand later this year with the opening of **Disney's Art of Animation Resort**.

Wild Recognition

The Walt Disney Company wins coveted Jane Goodall prize



Get an up-close look at the cotton-top tamarin, one of the world's most endangered primates, at the **Rafiki's Planet Watch®** area of Disney's **Animal Kingdom Theme Park**.

For many Passholders, **Disney's Animal Kingdom®** Park is an opportunity to get up close to the thrill of nature and maybe take in the thrills of **Expedition Everest®**. But one Disney executive, who got her start at the Park, recently enjoyed a thrill of a different kind.

The Walt Disney Company recently won The Jane Goodall Institute Global Leadership Award for Corporate Social Responsibility. **Dr. Beth Stevens, Senior Vice President of Corporate Citizenship, Environment & Conservation** for The Walt Disney Company was honored to accept the prize from her personal hero, Dr. Jane Goodall.

"There's so much going on behind the scenes that our Guests don't know about," said Dr. Beth, whose expanded role now takes her far beyond **Walt Disney World® Resort**. "Disney supports

scientists around the world. We've got a cotton-top tamarin monkey conservation program in Colombia, South America, that is not only doing important scientific work, but also creating livelihoods and business for local people, and helping them realize the value of the forest."

"In Africa, we have a group involved with gorilla rehabilitation and conservation, and another individual studying elephant communication." Dr. Beth also shared that scientists from **Disney's Animal Kingdom** are hands-on doing the actual work in these studies.

"It's an awesome responsibility to help carry forth this legacy of caring for wildlife and nature, but with the help of our Cast Members and all of our Guests, we will have a positive impact on the planet."



An epic advance screening for Passholders!

Saturday and Sunday, March 3 and 4, 2012, we're inviting Passholders to an advance movie screening—more like a journey to another world—almost a week before the general public sees it!

Disney's **John Carter** is a live-action landmark in movie history. It took Hollywood 100 years to reach the level of storytelling and technical virtuosity needed to bring the fantastic visions of author Edgar Rice Burroughs to the big screen. It also took a director so skillful, that he could

take us from beneath the sea to the far reaches of outer space and win two Academy Awards® along the way. (Best Picture for Disney•Pixar's **Finding Nemo** and **WALL-E**.)

In the film, you'll follow John Carter from Civil War-era Earth to another planet, which enables him to gain astonishing powers. This comes in handy for defending a kingdom attacked by 12-foot-tall barbarians!

Check out the trailer at disney.go.com/johncarter.



Director Andrew Stanton talks about **John Carter** and the Disney action/adventure legacy

Were you influenced by the legacy of Disney action/adventure movies for this project?

I didn't really set out to continue in the Disney tradition of live-action adventure movies at first. I was kind of shocked that, more than I had ever planned, **John Carter** fits into what you might have felt when you first saw *20,000 Leagues Under the Sea* and *Swiss Family Robinson*. And that's a good thing. At its core, through and through, it's a pure adventure film.

What intrigued you about the *John Carter* story?

John Carter is really the story of a person finding a greater purpose beyond anything he'd ever imagined. He has all those dynamics, the doubts and contradictions, that we can probably relate to in life. But **John Carter** literally has to go to an entirely new world to find his humanity.

As a fan of the story, it must be satisfying to bring it to the screen.

I spent most of my life as a **John Carter** fan, always hoping that someone, someday would finally realize this iconic character and his world on the screen. It's an honor to have had such a direct influence on having that happen. I just feel lucky that I got to be a part of it in any way.

Exclusive Passholder Screening

Walt Disney Pictures presents



“JOHN CARTER”

Saturday & Sunday,
March 3 & 4, 2012
10 a.m., 2 p.m. & 6 p.m.

Disney's Hollywood Studios®
Premiere Theatre

This is a 3-D, large-screen presentation. Rated PG-13 (may be too intense for younger viewers)

NOTE: ONLINE RESERVATIONS ONLY!

Visit wdwscreeningtickets.com to sign up for one of the shows.

Valid Passholder ID required. Valid Theme Park admission is required. Due to limited availability, sign-up is required. Entertainment and events are subject to change without notice.

The Voices Behind the Music

OneRepublic talks about Disney Parks, Memories and “Good Life”



WARNING: When you hear OneRepublic’s song, “Good Life” you WILL be whistling the song the rest of the day.

But that’s not a bad thing! This catchy song caught the ears of Disney, who chose to use it in the 2012 national campaign. OneRepublic (famous for other hits like “Apologize,” “Stop and Stare” and “All the Right Moves”) recently visited Walt Disney World® Resort to film a video celebrating magical Disney Park memories. We caught up with them to ask them about their time with Disney.

So tell us about your song, “Good Life.” It’s already been popular and now Disney Parks is using it for their 2012 celebration!

Drew Brown: I know it’s been phenomenal. You never know how someone is going to respond when you write a song, but it’s been crazy. I mean, now we’re in front of the castle! We never thought

we’d be involved with a song that would be big enough to work with the Disney brand.

Ryan Tedder: This song has always been about our lives being something bigger. So when Disney asked us about it, I felt like this was the perfect mash-up or synergy for this song. I’ve been going to Disney World since I was 3. When you are at a Disney Park, you really are living the good life!

Tell us about that. How is it working with Disney on this video?

Drew Brown: None of us knew how amazing this was going to be until we got here. It’s my first time here. I’ve got the “First Time Here” pin! And I got to hang out with Goofy a lot this morning.

Brent Kuzle. To me, it’s like coming home. I grew up near Disneyland® and was an Annual Passholder. So to me, Disney is all about great memories with my family.

Okay, you’ve had a few days working here in the Parks. If you had one more day to just hang out and do whatever you wanted, what would you do?

Brent Kuzle: I would hang out at Tom Sawyer Island. All day and just hide and play.

Drew Brown: I think I’d spend all day at Star Tours®. Fifty different ways to ride? You never know!

Zach Filkins: I would eat everything. Turkey legs and funnel cakes...everything!

Eddie Fisher: I would ride all the rides all day. Seriously.

Ryan Tedder: I don’t know. I’ve lived a dream here! I’m not a big fan of shooting videos, but this has easily been the most enjoyable video we’ve ever shot. This has been awesome.



Go to disneyparks.com/OneRepublic to check out OneRepublic’s Walt Disney World® video shoot.

One More Disney Day February 29



24 Hours* of Magic. Plus a chance to win a Disney getaway!

Did you know that in 2012, you’ll get more time to spend making memories at Disney Parks, thanks to “One More Disney Day” and a little calendar phenomenon called Leap Year?

We’ve come up with extra-special ways for you to make the most of this extra time.

• 24 HOURS OF MAGIC

Beginning at 6 a.m. on Leap Day, February 29, 2012, Magic Kingdom® Park will be open 24 hours straight for the first time in history! That’s an entire nonstop day to enjoy select attractions, meet some characters and more.

• A VACATION GIVEAWAY, EVERY DAY**

Each and every day from 1/1 to 2/29/12, we’re giving away one 4-night/5-day Disney vacation for 4, including airfare, accommodations, Theme Park tickets and more!

Visit OneMoreDisneyDay.com to learn more!

*Hours of operation 6 a.m. on 2/29 to 6 a.m. on 3/1/12; subject to capacity restrictions.

Valid Theme Park admission required.

**NO PURCHASE/ TEXT MESSAGE NECESSARY. Void where prohibited. Open only to persons who are, as of Entry, legal residents of, and physically located within, the 50 U.S., D.C. or Canada (excluding Quebec) and who are not Minors. Sweepstakes starts 12:01 AM (EST) on 1/1/12 and ends 11:59:59 PM (EST) on 2/29/12. To enter, send on your cell phone the keyword “DISNEYDAY” as an SMS text message to the SMS shortcode 347639 (DISNEY). Message & data rates may apply. Or to enter for free and for Official Rules, visit disney.com/memoriesweeps. If entering via SMS, you will receive a confirmation text in response to your entry. LIMIT: ONE ENTRY ALLOWED PER PERSON/ CELL/ADDRESS FOR EACH DAY. Sponsor: Disney Online, 500 S. Buena Vista Street, Burbank, CA 91521.

New enchantment sets sail!

Disney Fantasy joins the Disney Cruise Line fleet



The people who put magic, wonder and a dream on the water are about to unveil a fantasy on the high seas as well. And so at the end of March 2012, **Disney Fantasy** will cast off on her maiden voyage.

Building on the classic style of the other three ships in the fleet (including her sister ship, **Disney Dream**), **Disney Fantasy** seamlessly combines 20th-century design with state-of-the-art technology and Disney enchantment.

To board this magnificent ship is to be transported to an age of adventure and imagination, where Art Nouveau elegance and sophistication mingle with Disney storytelling and whimsy. In fact, as soon as you step into the Atrium lobby, you'll be welcomed by Mademoiselle Minnie Mouse—a spectacular bronze statue dressed in vintage fashion with steamer luggage at her side.

Of course, as with each **Disney Cruise Line**® ship, you'll discover separate areas for kids, teens, adults and families, so every member of your party will think the magic was created just for them!

We invite you and your family to embark on an unforgettable 7-Night Eastern or Western Caribbean adventure aboard **Disney Fantasy**, where you can experience the comforts, service and timeless beauty of a ship that promises to capture the hearts of everyone who steps on board.

With the addition of the newest ship, **Disney Cruise Line** will sail from more home ports than ever. In 2012, our ships will be sailing from Port Canaveral, New York, Galveston, Seattle and Los Angeles, to great locations such as New England & Canada, Alaska, Hawai'i and the Mexican Riviera.

For itineraries and information on all our ships, visit disneycruise.com.



Be sure to visit disneycruise.com for fantastic video updates on Disney Fantasy, including a video journal of the Atlantic crossing in mid-February featuring behind-the-scenes stories from cast and crew.



Goofy leads the way for junior daredevils.

Passholders young (and not-so-young) who enjoyed The Barnstormer at Goofy's Wiseacre Farm will be happy to know the junior coaster thrills of that attraction are back with a thematic change: Goofy has goofed his way into the role of a circus stunt pilot, The Great Goofini.

"Every good circus needs a good stunt performer. And who better than Goofy to be our resident daredevil?" said **Chris Beatty, Sr. Concept Designer Director**, Walt Disney Imagineering.

"As The Great Goofini, he'll invite Guests to board his stunt plane for a quick flight around Storybook Circus. He's the perfect host for an experience that serves as many kids' first thrill ride."

Look for The Great Goofini to take flight in **New Fantasyland**® this spring, together with the first half of an expanded **Dumbo the Flying Elephant**® attraction; the "refreshing" Casey Jr. Splash & Soak Station; a revamped **Fantasyland Train Station** and more.

The Gift of Magic

Looking for a gift for your sweetie this Valentine's Day? Why not wrap up a little **Disney magic** in the form of a Disney Gift Card!

Disney Gift Cards can be used to pay for practically anything—including Theme Park tickets, food, merchandise, hotel accommodations and more! Disney Gift Cards are available at many Resort and Theme Park locations and can be loaded and reloaded with any dollar amount from \$5 to \$1,500.

Cards can also be purchased at DisneyGiftCard.com.



Enjoy the suite life at Atlanta Braves Spring Training



Here's a chance for Passholders to live a baseball life of luxury. This year, our entire suite level is available for two great Atlanta Braves Spring Training games:

Sunday, March 11 vs. the Toronto Blue Jays
or **Saturday, March 31 vs. the Detroit Tigers**

Both games are set to begin at 1:05 p.m. at ESPN Wide World of Sports Complex. Admission includes passes to get on the field for batting practice before the game, a full ballpark buffet (served noon to 1:30 p.m.) and a chance to rub elbows with Mickey Mouse. Plus, your kids get to run the bases after the game!

Space is limited, so call **407-938-3223** to reserve your ticket package today.

With on-field passes: \$99 Guests 10+, \$89 Guests 3-9

Without on-field passes: \$87 Guests 10+, \$77 Guests 3-9

Prices include tax. Suites open at 11:30 a.m. Valid Passholder ID required. Tickets are limited. Game date, time and opponent are subject to change without notice. For the complete Braves spring training schedule, go to espnwwos.com/atlantabraves.

Meet the *perfect match* to your Annual Pass

Whatever your style, there's a design for you!

Choose a unique card and start enjoying perks and rewards.



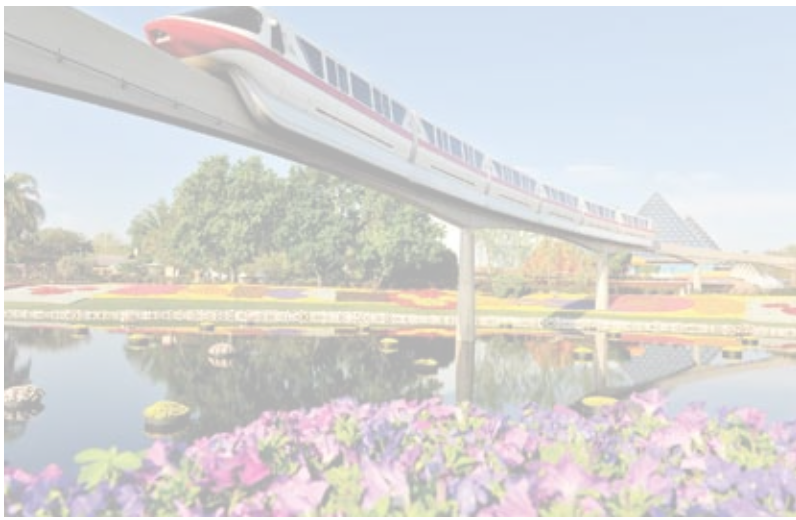
Become a Disney's Premier Visa® Cardmember today and receive a **\$100 Statement Credit** after first use.

[Apply Now](#)

Visit DisneyVisa100Offer.com or Call 888-752-3788 and mention key code 6GSB01.

To be eligible for Disney's Visa Credit Card you must have a valid permanent home address within the 50 United States or the District of Columbia. Accounts subject to credit approval. Restrictions and limitations apply. Disney's Visa Credit Cards are issued by Chase Bank USA, N.A. See DisneyVisa100Offer.com for pricing and rewards details.

© Disney/Pixar SM, © Disney



Magic in Bloom

The Epcot® International Flower & Garden Festival

**FOR REFERENCE ONLY
PLEASE PROOF THIS PAGE FROM MAIN
MICKEY MONITOR LAYOUT.**

The excitement is growing in addition to the return of many favorites, Passholders will be treated to special performances, new shows (see below). Add to that the fluttering fantasy of a beautiful butterfly house. And the chance to catch the more than 75 Disney Characters and topiaries that populate the Festival, including a blooming tribute to Disney's animated classic **Fantasia** at the front of the Park. Of course each weekend, you'll be treated to the sounds of the **Flower Power Concert Series**, featuring live performances from music stars of the '60s and '70s (see calendar in back of the *Mickey Monitor* for lineup).

HGTV Designers' Stage

Friday-Sunday 12 p.m. and 3 p.m. • Festival Center

- John Gidding: March 9-11
(Curb Appeal: The Block)
- TBD: March 16-18
- **NEW!** Jason Cameron: March 23-25
(Desperate Landscapes and Man Caves)
- **NEW!** Camille Styles: March 30-April 1
(Design Happens)
- **NEW!** Dan Faires: April 6-8
(HGTV Design Star Season 5, HGTV.com Fan Favorite)
- **NEW!** Brandon Johnson: April 13-15
(Make My Yard Disney)
- **NEW!** Meg Caswell: April 20-22
(host of Meg's Great Rooms & HGTV Design Star Winner Season 6)
- **NEW!** Monica Pedersen: April 27-29
(designer/host HGTV's Dream Home and Designed to Sell)
- TBD: May 4-6
- TBD: May 11-13
- TBD: May 18-20

Presenters subject to change without notice.

PASSHOLDER Calendar



**ATLANTA BRAVES
SPRING TRAINING**
ESPN Wide World of Sports Complex
March 3-April 2, 2012

The boys of summer return for the 2012 MLB pre-season. (See how you can catch the action from a luxury suite.)



**CELEBRATE EARTH DAY WITH
A PARTY FOR THE PLANET**
Disney's Animal Kingdom® Park
April 13 and 22, 2012

Join in the fun by visiting four stations throughout the Park and learn new ways to care for wildlife and wild places. Families and children will make new discoveries about animals and nature at each station. 9 a.m.-5 p.m. daily.



PRO SOCCER CLASSIC
ESPN Wide World of Sports Complex
February 24-March 3, 2012

Sporting Kansas City, Toronto FC and the Orlando City Soccer Club are part of an eight-team field in this Major League Soccer tourney. Visit espnwwos.com/prosoccerclassic for more details.



**THE MAGIC, THE MEMORIES AND YOU!
DISNEY ROMANCE EDITION**
Magic Kingdom Park
February 1-April 15

Beauty and the Beast. Lady and the Tramp. Disney princes and princesses. On these very special nights, the Cinderella Castle projection show includes a romantic tribute highlighting some of your favorite Disney couples!



ONE MORE DISNEY DAY
Magic Kingdom® Park
Leap Day, February 29, 2012

What would you do with one more Disney day? How about enjoying 24 hours in Magic Kingdom Park?



**JOHN CARTER
PASSHOLDER MOVIE PREVIEW**
Disney's Hollywood Studios®
March 3 & 4

Be among the first to see this highly anticipated Disney action epic motion picture. Check out the trailer at disney.go.com/johncarter. Visit wdwscreeningtickets.com to sign up for one of the shows.



**INTERNATIONAL FLOWER &
GARDEN FESTIVAL**
Epcot®
March 7-May 20, 2012

From butterflies to begonias, the Festival is abuzz with fun new enhancements and returning favorites. As well as the sweet sounds of some of your favorite live music from the '60s and '70s.



FLOWER POWER CONCERT SERIES
Epcot® America Gardens Theatre 5:15, 6:30 and 7:45 p.m.
Select dates thru May 20, 2012

3/9-3/11	Jose Feliciano
3/16-3/18	Starship starring Mickey Thomas
3/23-3/25	The Guess Who
3/30-4/1	The Spinners
4/6-4/8	Chubby Checker & the Wildcats
4/13-4/15	Paul Revere & the Raiders
4/20-4/22	The Turtles featuring Flo & Eddie
4/27-4/29	Chuck Negron formerly of Three Dog Night
5/4-5/6	The Orchestra starring former members of ELO
5/11-5/13	Herman's Hermits starring Peter Noone
5/18-5/20	Davy Jones

Entertainment subject to change.

Passholder Benefits Spotlight

Tame a wild hunger!
Save at Yak & Yeti Restaurant or Rainforest Café Restaurant at Disney's Animal Kingdom Theme Park. Enjoy a 10% discount off the regular price (excludes alcohol, applicable tax and gratuity, and special events) of lunch and dinner entrees for the Passholder and up to three (3) Guests.

Take your taste buds around the world!
Save at select World Showcase Restaurants at Epcot® Monday through Friday during lunch hours: Choose from Restaurant Marrakesh, Teppan Edo, Tutto Italia Restaurant, Nine Dragons Restaurant, San Angel Inn Restaurant and Tokyo Dining and enjoy a 10% discount off the regular price of food and nonalcoholic beverages (excluding applicable tax and gratuity). Valid for the Passholder and up to three (3) Guests. Priority seating is available. Lunch hours vary by location. Inquire at time of booking. (Discount not available on Easter 4/8/12 and Mother's Day 5/13/12.)

Go to disneyworld.com/dining to make reservations online!

Benefits are valid through May 31, 2012.

CUT ALONG DOTTED LINE TO DETACH CALENDAR.

The Mickey Monitor is mailed 4 times a year: February, May, August and November.